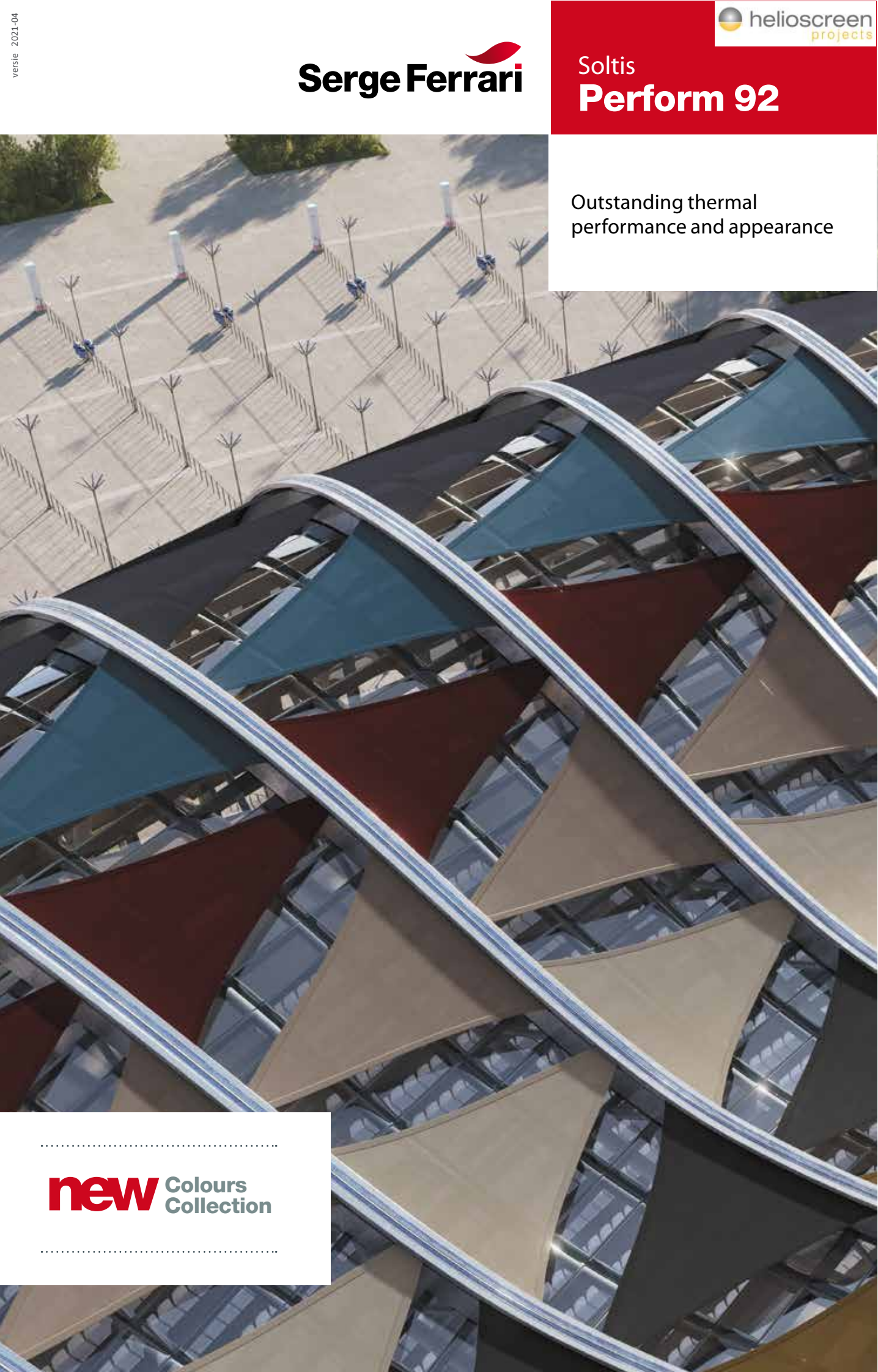


Outstanding thermal  
performance and appearance

.....  
**new** Colours  
Collection  
.....



## Main applications

Facade blinds, veranda and glass roof blinds, drop-arm awnings and shade sails



## ■ Keeps out up to 97% of the heat

Soltis Perform 92 acts like a heat shield.

Its micro-vents filter the heat, reducing a building's energy costs.

## ■ Glare control

is combined with excellent transparency for better user comfort. Soltis Perform 92's thermal and optical performance earns building certification programme points (LEED, BREEAM, Minergie, HQE, etc.).

## ■ High colour resistance over time

Colour is preserved even after several years of exposure (according to the ISO 105 A02 scale).

# 4x

## MORE RESISTANCE

than a standard product

The Soltis Perform 92 fabric's resistance delivers longer durability to provide you with better performance over a longer period of time.

# 2x

## THINNER

than a standard product

Reduced thickness for enhanced facade appearance and reduced bulk, even with extended blind heights.

## Soltis Perform 92 - 3 key properties



**Dimensional stability**  
thanks to Preconstraint technology



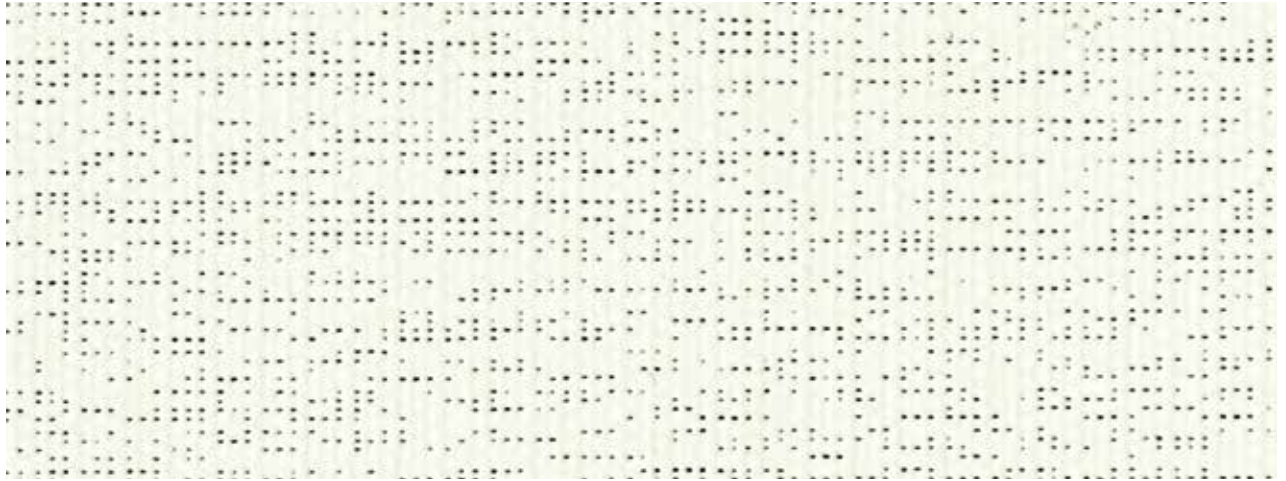
**Easy to clean**



**UV resistant**



# Serge Ferrari | Soltis Perform 92

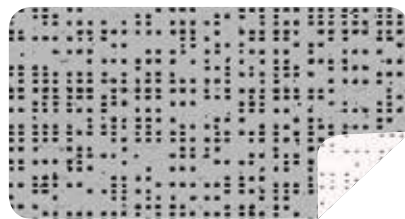


**new** Snow white 177 cm — 267 cm

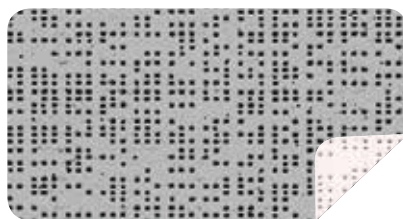
92-50690



**White** 177 cm — 267 cm 92-2044



**Alu/White** 177 cm — 267 cm 92-2051



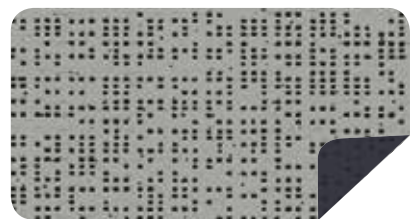
**Alu/Oat** 177 cm — 267 cm 92-2046



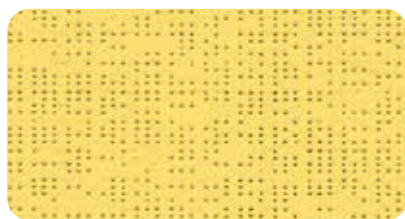
**Alu/Alu** 177 cm — 267 cm 92-2048



**Alu/ Medium grey** 177 cm — 267 cm 92-2074



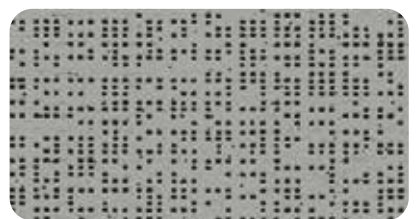
**Alu/Anthracite** 177 cm 92-2068



**Gold** 177 cm 92-50273



**Copper** 177 cm 92-50274



**Beaten metal** 177 cm — 267 cm 92-2045



**Bronze** 177 cm — 267 cm 92-2043



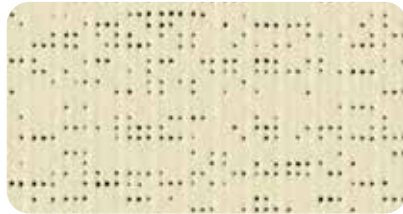
**Beetle** 177 cm 92-2149



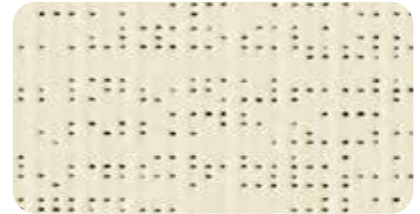
**new Deep black** 177 cm — 267 cm 92-51176



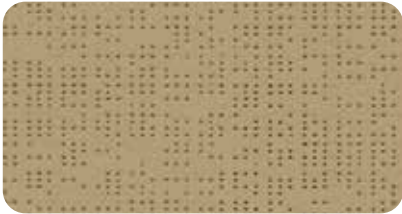
**Champagne** 177 cm — 267 cm 92-2175



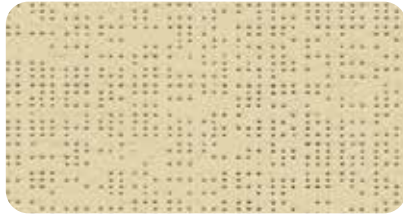
**new Quartz** 177 cm — 267 cm 92-50303



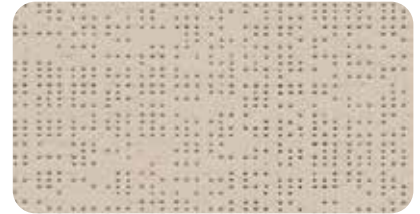
**new Shea** 177 cm — 267 cm 92-50843



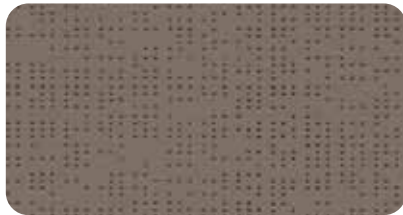
**Pepper** 177 cm — 267 cm 92-2012



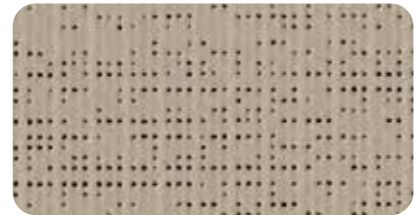
**Hemp** 177 cm — 267 cm 92-50265



**Sandy beige** 177 cm — 267 cm 92-2135



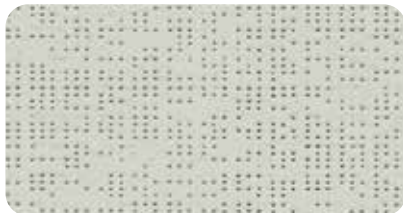
**Havana-Brown** 177 cm 92-50266



**new Taupe** 177 cm — 267 cm 92-50850



**Cloud** 177 cm — 267 cm 92-50272



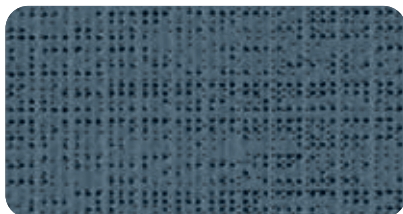
**Boulder** 177 cm — 267 cm 92-2171



**Concrete** 177 cm — 267 cm 92-2167



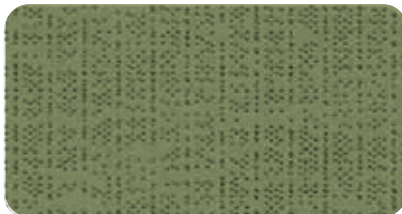
**new Dark grey** 177 cm — 267 cm 92-51177



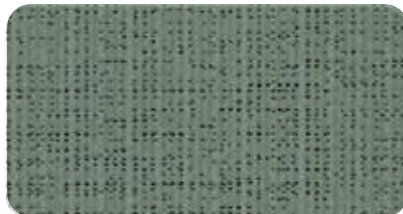
**new Celestial grey** 177 cm 92-51178



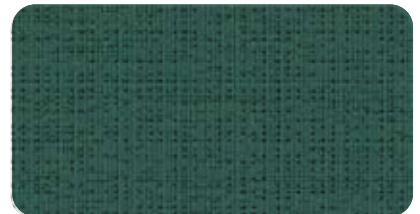
**Anthracite** 177 cm — 267 cm 92-2047



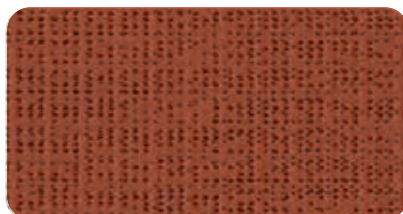
**Moss green** 177 cm 92-2158



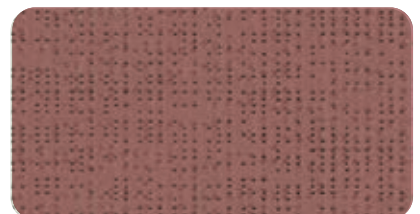
**new Green-grey** 177 cm 92-51179



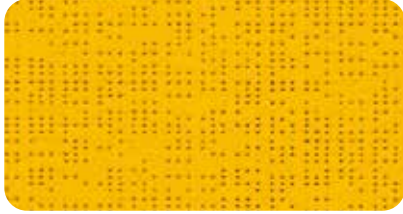
**new Tennis green** 177 cm 92-8056



**new Brick** 177 cm 92-51180



**new Deep red** 177 cm 92-51181



**Buttercup** 177cm

92-2166



**Lagoon** 177cm

92-2160



**Orange** 177cm

92-8204



**Aniseed** 177cm

92-2157



**new Deep blue** 177cm

92-51182



**Red** 177cm

92-8255

## new Colours Collection

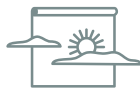
TERRACE



INTERIOR  
BLINDS



EXTERIOR  
BLINDS



A range of colours  
to match all of your  
projects

The new Soltis Perform 92 range features colours designed by our design office to complement the building's entire environment (joinery, openings and facades). The colours present tones that match the most common colours (RAL and NCS references).



**Download**

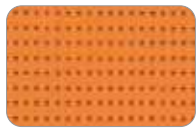
our RAL and NCS  
colour correspondence.



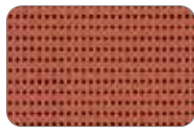
## ■ Colours coordinated with Soltis Horizon 86



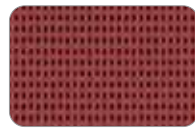
86-2166



86-8204



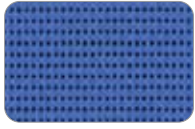
86-51180



86-51181



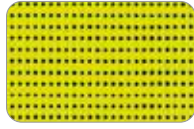
86-8255



86-51182



86-2158



86-2157



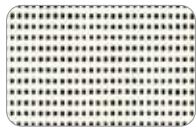
86-2135



86-2012



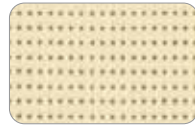
86-2043



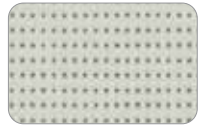
86-50690



86-2044



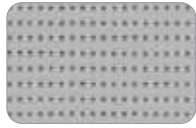
86-2175



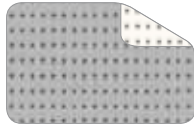
86-2171



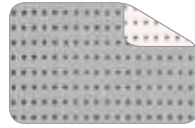
86-2167



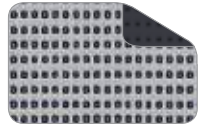
86-2048



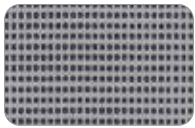
86-2051



86-2046



86-2068



86-2045



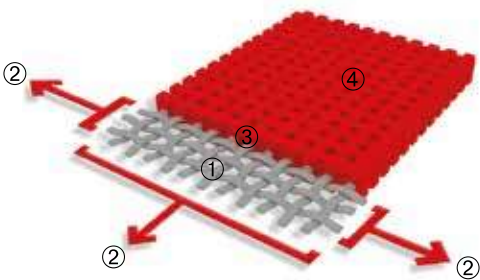
86-2047



86-51176

## ■ Exclusive Précontraint® technology

This unique worldwide patented technology consists of maintaining the composite in bi-axial tension throughout the entire manufacturing cycle. It gives our materials outstanding performance, allowing them to surpass market standards in terms of dimensional stability, mechanical strength, coating thickness and flatness.



High tenacity polyester micro-cable reinforcement	①	Superior resistance to elongation and tearing
Coating under bi-axial tension, exerted in warp and weft	②	No deformation during implementation and use
Superior coating at the crest of the wires and anti-fouling surface treatment	③	Superior aesthetic and mechanical durability
Extreme flatness and low thickness	④	Smooth, easy to clean surface with small footprint and easy winding

## ■ Solar and light properties (according to EN 14501)

	Width (in cm)	TS	RS	AS	TV n-h	EN 13363-2* Glazing D	
						$g_{tot}^e$	$g_{tot}^i$
92-2012	177 267	7	30	63	6	0.04	0.24
92-2043		4	13	83	4	0.04	0.28
92-2044		19	68	13	17	0.07	0.11
92-2045		4	35	61	4	0.03	0.22
92-2046 A		12	46	42	10	0.05	0.18
92-2046 B		12	63	25	10	0.05	0.14
92-2047		5	8	87	5	0.04	0.28
92-2048		8	46	46	8	0.04	0.18
92-2051 A		12	49	39	11	0.06	0.17
92-2051 B		12	70	18	11	0.05	0.10
92-2068 A		4	34	62	4	0.03	0.22
92-2068 B		4	8	88	4	0.04	0.28
92-2074 A		4	37	59	4	0.03	0.21
92-2074 B		4	25	71	4	0.03	0.24
92-2135		11	46	43	8	0.04	0.19
92-2149		5	16	79	4	0.04	0.27
92-2157		15	51	34	10	0.05	0.20
92-2158		7	28	65	5	0.03	0.24
92-2160		11	36	53	5	0.04	0.24
92-2166		21	54	25	17	0.07	0.19
92-2167		6	19	75	5	0.04	0.26

	Width (in cm)	TS	RS	AS	TV n-h	EN 13363-2* Glazing D	
						$g_{tot}^e$	$g_{tot}^i$
92-2171		8	41	51	6	0.04	0.20
92-2175		19	65	16	17	0.07	0.14
<b>new</b> 92-8056		2	10	88	2	0.03	0.28
92-8204		21	45	34	11	0.06	0.23
92-8255		12	28	60	4	0.05	0.27
92-50265		9	49	42	6	0.04	0.18
92-50266		4	19	77	4	0.03	0.26
92-50272		12	55	33	9	0.05	0.16
92-50273		8	42	50	5	0.04	0.21
92-50274		8	35	57	4	0.04	0.24
<b>new</b> 92-50303		15	63	22	10	0.05	0.15
<b>new</b> 92-50843		13	62	25	10	0.05	0.14
<b>new</b> 92-50850		5	31	64	3	0.03	0.23
<b>new</b> 92-50690		17	73	10	15	0.06	0.10
<b>new</b> 92-51176		3	5	92	3	0.03	0.29
<b>new</b> 92-51177		3	18	79	3	0.03	0.26
<b>new</b> 92-51178		5	20	75	4	0.03	0.26
<b>new</b> 92-51179		6	29	65	4	0.03	0.24
<b>new</b> 92-51180		6	27	67	3	0.03	0.26
<b>new</b> 92-51181		4	17	79	3	0.03	0.28
<b>new</b> 92-51182		8	26	66	4	0.03	0.27

**TS**: Solar Transmission in %

**RS**: Solar Reflection in %

**AS**: Solar absorption in %

**TS + RS + AS** = 100% of the incident energy

**TV n-h**: Normal Visible light transmission - hemispherical in %

**A**: Aluminium surface exposed to the sun

**B**: Coloured surface exposed to the sun

$g_{tot}^e$ : External Solar Factor

$g_{tot}^i$ : Indoor Solar Factor

\* Detailed  
EN 13363-2 method

Takes into account the spectral values of glazing transmission and reflection + blind complex for calculating the solar factor g<sub>tot</sub>.  
Type "D" glazing: insulating double glazing with low emissivity on surface 2 (4 + 16 + 4; Argon filling) g = 0.32 - U = 1.1



# Soltis Perform 92

	■ Technical properties	Standards
Openness factor	4%	
Weight	420 g/m <sup>2</sup>	EN ISO 2286-2
Thickness	0.45 mm	
Width	177 cm - 267 cm	
■ Roll length		
Standard piece size: 177 cm	50 lm	
Standard piece size: 267 cm	40 lm	
■ Physical properties		
Breaking resistance (warp / weft)	310/210 daN/ 5 cm	EN ISO 1421
Tear resistance (warp / weft)	45/20 daN	DIN 53.363
■ Reaction to fire		
Rating	<b>M1/NFP 92-507</b> — <b>B1/DIN 4102-1</b> — BS 7837 — BS 5867 — <b>Schwerbrennbar-Q1-Tr1/ONORM A 3800-1</b> <b>Class 1/EN 13373</b> — <b>M1/UNE 23.727-90</b> — <b>VKF 5.3/SN 198898</b> — 1530.3/ <b>AS/NZS G1/GOST 30244-94</b> — <b>Method 1/NFPA 701</b> — CSFM T19 — <b>Class A/ASTM E84</b>	
Euroclass	<b>B-s2.d0</b>	EN 13501-1
■ Management system		
Quality	ISO 9001	

## Certifications. labels. guarantees. recyclability



## ■ Tools and services

- ACV and FDES available on request
- Personalized thermal performance simulation service for your projects and associated Soltis solar protection: get in touch with your Serge Ferrari contact
- Tool for assessing achievable energy savings with Soltis sun protection: [www.textinergie.org](http://www.textinergie.org)
- Document and photo library: [www.sergeferrari.com](http://www.sergeferrari.com)

The technical characteristics listed are average values with a tolerance of +/- 5%.

Purchasers of our products are responsible for their application or transformation with regard to any third party rights. Purchasers of our products are also responsible for their implementation and installation in compliance with the destination country's best practices and safety rules. Contractual guarantees are included in the terms of the guarantee.

The values mentioned in this document are based on test results in compliance with study practice. These are provided as indications so that customers can obtain optimal performance from using our products. These are subject to technical improvements and we reserve the right to change specifications at any time. Purchasers of our products are responsible for asserting that the data presented above is in compliance with the validity of the above data.